



Edward Road, Windlesham

Offers in excess of **£450,000**



Edward Road, Windlesham, Surrey

Three bedroom end of terrace house with garage, located in a private lane just a short walk of village shops in Windlesham. The property is being sold with no onward chain.

FEATURES

- No onward chain
- Ideal buy to let
- Private lane
- No through road
- End of terrace
- Walking distance to village shops
- Choice of local gastro pubs
- Easy access to junction 3 of the M3
- Gas central heating
- Double glazing

ACCOMMODATION

- Entrance Hall
- Sitting/dining room
- Kitchen
- Three bedrooms
- Upstairs bathroom

OUTSIDE

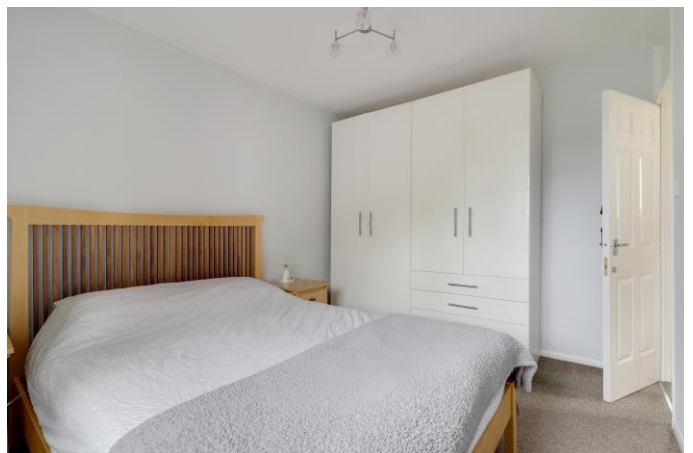
- Paved garden
- Garage in block

EPC RATING

C

LOCAL AUTHORITY/ COUNCIL TAX

Surrey Heath band D





 = Reduced Headroom Below 1.5 / 5'0

Approximate Gross Internal Area
69.0 sq m / 743.0 sq ft
(Excludes Garage)
Garage Area 12.50 sq m / 135.0 sq ft

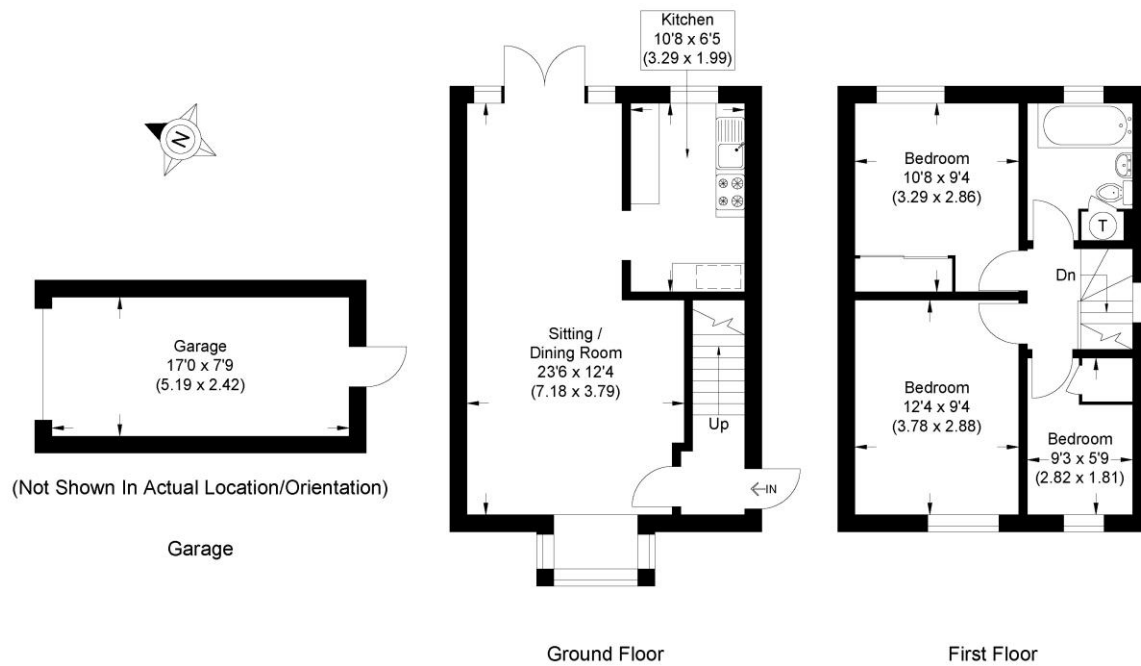
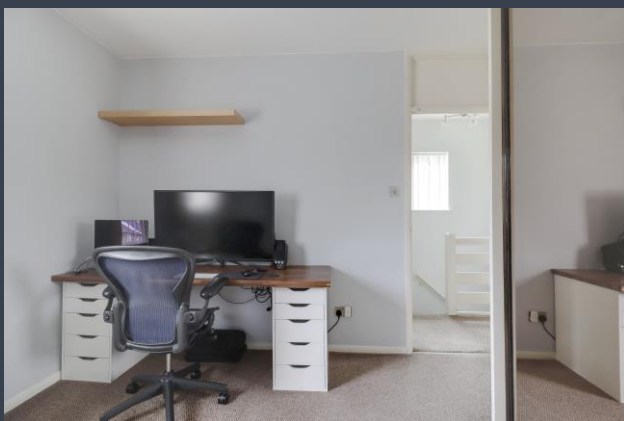


Illustration for identification purposes only, measurements are approximate, not to scale.

Disclaimer: We wish to inform prospective purchasers that we have prepared these sales particulars as a general guide. We have not carried out a detailed survey, nor tested the services, appliances and specific fittings. Room sizes are approximate and rounded: they are taken between internal wall surfaces and therefore include cupboards / shelves, etc. Accordingly, they should not be relied upon for carpeting, curtains / blinds and kitchen equipment, whether fitted or not, are deemed removable by the vendor unless specifically itemized within these.

Postcode for sat nav: **GU20 6EX**




NEWTON ROWE
SALES & LETTINGS

The Old Dairy, 7 Updown Hill, Windlesham, Surrey GU20 6AF
enquiries@newtonrowe.co.uk | 01276 986900